



# KeyParts

Body Parts & Panels for Trucks, Vans, and SUV's

## AUTO Models

## 1964-1999

CHEVY, FORD, DODGE,  
PLYMOUTH, OLDS, BUICK

Also: Import Autos



CHEVY EL CAMINO: 78-89  
KeyParts Model # 0819



FULL REAR QUARTER/PNL.....0819-129, 130



12"H x 35.2"W  
RR LWR Q/P SECT.....0819-133, 134



BUICK REGAL/CENTURY: 97-05  
KeyParts Model # 0823



DOG LEG.....0823-121, 122



ROCKER PANEL.....0823-103, 104



DODGE DART: 64-66  
KeyParts Model # 1512



WHEELARCH.....1512-125, 126



LWR RR Q/P SECT.....1512-133, 134



DODGE CHALLENGER: 70-74  
KeyParts Model # 1560



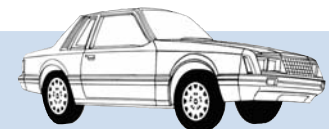
34 1/2"W x 14"H  
LOWER RR Q/P SECT.....1560-133, 134



PLYMOUTH BARRACUDA: 70-74  
KeyParts Model # 1541



LWR RR Q/P SECT.....1541-133, 134



FORD MUSTANG: 79-86  
KeyParts Model # 1903



COMPLETE FLOOR SECT.....1903-221, 222



DODGE CHARGER: 68-70  
KeyParts Model # 1521



REAR QTR PANEL.....1521-129, 130



PLYMOUTH DUSTER: 70-76  
KeyParts Model # 1510



LWR RR Q/P SECT.....1510-133, 134



FORD TAURUS: 86-91  
KeyParts Model # 1950



9"W x 12"H  
DOG LEG (4 DR).....1950-123, 124

## AUTO ROCKER PANELS

### BUICK PARK AVENUE/LeSABRE



RCKR PNL: 91-96.....0706-103, 104

### OLDS CUTLASS



61 1/2"W x 3 1/2"H

RCKR PNL: 88-97 (2 DR).....0720-103, 104

### OLDS CIERA



172"W x 6 1/4"H

RCKR PNL: 85-94 (4 DR).....0722-103, 104

### CHEVY CAMARO



72"W x 6 1/4"H

RCKR PNL: 67-69 (2 DR).....0802-103, 104

### CHEVY CAMARO



64 5/8"W x 6 3/4"H

RCKR PNL: 70-81 (2 DR).....0804-103, 104

### CHEVY CORSICA



172"W x 4"H

RCKR PNL: 87-96 (2 DR).....0820-103, 104

### CHEVY BERETTA



67 1/4"W x 5 5/8"H

RCKR PNL: 88-95.....0821-103, 104

### CHEVY CAVALIER



64 5/8"W x 6 3/4"H

RCKR PNL: 88-94 (2 DR).....0822-103, 104

### CHEVY CAVALIER



60 5/8"W x 6 3/4"H

RCKR PNL: 88-94 (4 DR).....0822-101, 102

### **NEW** PONTIAC GRAND PRIX



RCKR PNL: 99-02 (2 DR).....0830-101, 102



RCKR PNL: 99-02 (4 DR).....0830-105U



## CHROME AUTO BUMPERS: Ford Mustang



**Triple-Nickel Chromed Steel**

### 1964-1966

FRONT BUMPER.....1904-010C

REAR BUMPER.....1904-020C

### 1967-1968

FRONT BUMPER.....1905-010C

REAR BUMPER.....1905-020C

### 1969-1970

FRONT BUMPER.....1906-010C

REAR BUMPER.....1906-020C

### 1971-1973

FRONT BUMPER.....1907-010C

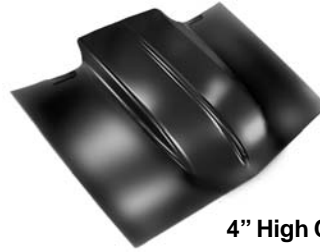
REAR BUMPER.....1907-020C

MUSCLE CAR COWL, RAM AIR, S.S. STYLE HOODS



COWL INDUCTION Style  
**Part # 0803-035**

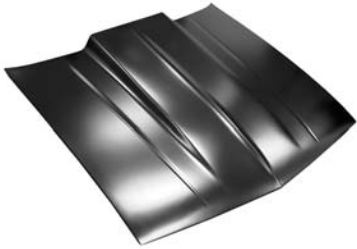
CHEVY Z28: 67-69



COWL INDUCTION Style  
**Part # 0803-036**

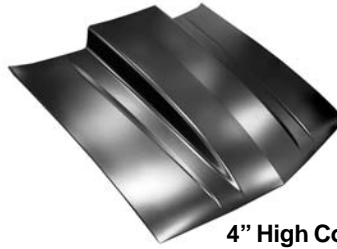
**4" High Cowl**

CHEVY CAMARO: 67-69



COWL INDUCTION Style  
**Part # 0806-035**

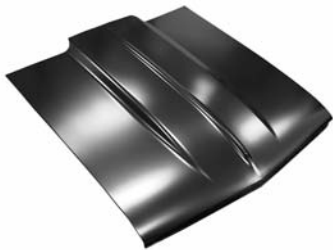
CHEVY CAMARO: 82-92



COWL INDUCTION Style  
**Part # 0806-036**

**4" High Cowl**

CHEVY CAMARO: 82-92



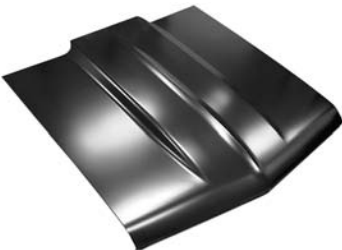
COWL INDUCTION Style  
**Part # 0815-035**

CHEVY CHEVELLE: 66



SS Style  
**Part # 0815-036**

CHEVY CHEVELLE: 66



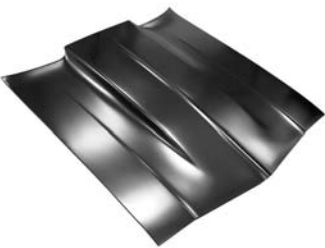
COWL INDUCTION Style  
**Part # 0815-038**

CHEVY CHEVELLE: 67



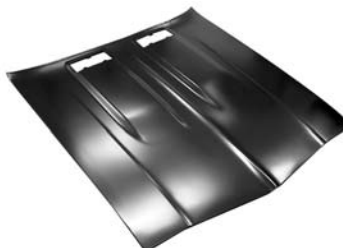
SS Style  
**Part # 0815-037**

CHEVY CHEVELLE: 67



COWL INDUCTION Style  
**Part # 0816-035**

CHEVY CHEVELLE: 69

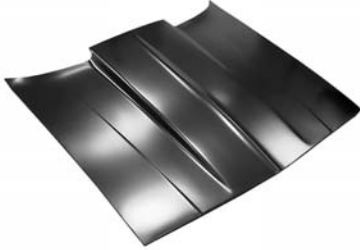


SS Style  
**Part # 0816-036**

CHEVY CHEVELLE: 69

AUTO HOODS

MUSCLE CAR COWL, RAM AIR, S.S. STYLE HOODS



COWL INDUCTION Style  
**Part # 0821-035**

CHEVY MALIBU: 78-87




COWL INDUCTION Style  
**Part # 0820-035**

CHEVY MONTE CARLO: 81-88



COWL INDUCTION Style  
**Part # 0831-035**

CHEVY NOVA: 62-65



COWL INDUCTION Style  
**Part # 0832-035**

CHEVY NOVA: 66-67

COWL INDUCTION Style  
**Part # 0833-036**

CHEVY NOVA: 68-72



COWL INDUCTION Style  
**Part # 0833-037**

4" High Cowl

CHEVY NOVA: 68-72

SS Style  
**Part # 0833-035**

CHEVY NOVA: 68-72



COWL INDUCTION Style  
**Part # 0834-035**

CHEVY NOVA: 73-74



SS Style  
**Part # 0823-035**

PONTIAC FIREBIRD (400 Engine): 67-69



SS Style  
**Part # 0823-040**

PONTIAC FIREBIRD (Hood Louvre Inserts): 67-69

AUTO HOODS

## IMPORT PARTS: HONDA, TOYOTA, SUBARU, VOLKSWAGON



### HONDA: CIVIC

<u>Part #</u>	<u>Description</u>
	1988-1991
29-09-00-1	HATCHBACK ROCKER PANEL LH
29-09-00-2	HATCHBACK ROCKER PANEL RH
29-09-01-1	SEDAN ROCKER PANEL LH
29-09-01-2	SEDAN ROCKER PANEL RH
29-09-58-1	SEDAN REAR WHEELARCH LH
29-09-58-2	SEDAN REAR WHEELARCH RH
29-09-59-1	2DR HATCHBACK REAR WHEELARCH LH
29-09-59-2	2DR HATCHBACK REAR WHEELARCH RH
	1992-1995
29-11-18-1	SEDAN FRT DOORSKIN FULL LH
29-11-18-2	SEDAN FRT DOORSKIN FULL RH
29-11-58-1	4DR REAR WHEELARCH LH
29-11-58-2	4DR REAR WHEELARCH RH
29-11-59-1	2DR HATCHBACK REAR WHEELARCH LH
29-11-59-2	2DR HATCHBACK REAR WHEELARCH RH
	1996-2003
29-36-58-1	4DR HATCHBACK REAR WHEELARCH LH
29-36-58-2	4DR HATCHBACK REAR WHEELARCH RH
29-36-59-1	3DR HATCHBACK REAR WHEELARCH LH
29-36-59-2	3DR HATCHBACK REAR WHEELARCH RH

### HONDA: ACCORD

<u>Item #</u>	<u>Description</u>
	1986-1989
29-20-01-01	ROCKER PANEL 4DR LH
29-20-01-02	ROCKER PANEL 4DR RH
29-20-58-1	REAR WHEELARCH 4DR LH
29-20-58-2	REAR WHEELARCH 4DR RH
29-20-59-1	REAR WHEELARCH 2DR LH
29-20-59-2	REAR WHEELARCH 2DR RH
	1990-1993
29-21-58-1	SEDAN REAR WHEELARCH LH
29-21-58-2	SEDAN REAR WHEELARCH RH
	1994-1997
29-22-58-1	SEDAN REAR WHEELARCH LH
29-22-58-2	SEDAN REAR WHEELARCH RH

### SUBARU: LOYALE

<u>Item #</u>	<u>Description</u>
	1985-1994
67-06-01-1	LOYALE SEDAN/WAGON ROCKER PANEL LH
67-06-01-2	LOYALE SEDAN/WAGON ROCKER PANEL RH
67-06-58-1	LOYALE REAR WHEELARCH 4DR LH
67-06-58-2	LOYALE REAR WHEELARCH 4DR RH

### TOYOTA: CAMRY/CRESSIDA

<u>Part #</u>	<u>Description</u>
	1987-1992
81-52-58-1	87-91 CAMRY SEDAN / 89-92 CRESSIDA REAR WHEELARCH LH
81-52-58-2	87-91 CAMRY SEDAN / 89-92 CRESSIDA RR WHLARCH RH
	1992-1996
81-53-58-2	CAMRY SEDAN/WAGON REAR WHEELARCH RH
81-53-58-1	CAMRY SEDAN/WAGON REAR WHEELARCH LH

### TOYOTA: COROLLA

<u>Item #</u>	<u>Description</u>
	1984-1987
81-73-58-1	COROLLA FWD SEDAN/LBACK RR WHEELARCH LH
81-73-58-2	COROLLA FWD SEDAN/LBACK RR WHEELARCH RH
	1988-1992
81-10-01-1	COROLLA SEDAN/WAGON ROCKER PANEL LH
81-10-01-2	COROLLA SEDAN/WAGON ROCKER PANEL RH
81-10-58-5	COROLLA SEDAN REAR WHEELARCH LH
81-10-58-6	COROLLA SEDAN REAR WHEELARCH RH
81-11-58-1	COROLLA LIFTBACK REAR WHEELARCH LH
81-11-58-2	COROLLA LIFTBACK REAR WHEELARCH RH
	1993-1997
81-12-58-1	COROLLA SEDAN REAR WHEELARCH LH
81-12-58-2	COROLLA SEDAN REAR WHEELARCH RH
81-12-58-3	COROLLA WAGON REAR WHEELARCH LH
81-12-58-4	COROLLA WAGON REAR WHEELARCH RH
81-12-59-1	COROLLA HATCHBACK REAR WHEELARCH LH
81-12-59-2	COROLLA HATCHBACK REAR WHEELARCH RH
81-13-58-1	COROLLA 5DR LIFTBACK REAR WHEELARCH LH
81-13-58-2	COROLLA 5DR LIFTBACK REAR WHEELARCH RH

### VOLKSWAGON: JETTA/GOLF/GTI

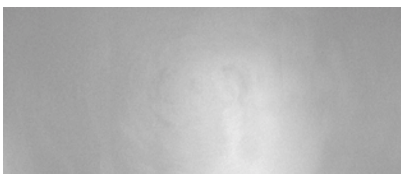
<u>Item #</u>	<u>Description</u>
	1985-1992
95-21-58-1	GOLF/JETTA 4DR REAR WHEELARCH LH
95-21-58-2	GOLF/JETTA 4DR REAR WHEELARCH RH
95-21-59-1	GOLF/JETTA 2DR WHEELARCH LH
95-21-59-2	GOLF/JETTA 2DR WHEELARCH RH
	1993-1999
95-22-00-1	GOLF/GTI 2DR RCKR PANEL W/EXT LH (Old Style)
95-22-00-2	GOLF/GTI 2DR RCKR PANEL W/EXT RH (Old Style)
95-22-59-1	GOLF/GTI 2DR REAR WHEELARCH LH (Old Style)
95-22-59-2	GOLF/GTI 2DR REAR WHEELARCH RH (Old Style)
95-22-01-1	GOLF/JETTA 4DR ROCKER PANEL LH (Old Style)
95-22-01-2	GOLF/JETTA 4DR ROCKER PANEL RH (Old Style)
95-22-58-1	GOLF/JETTA 4DR REAR WHEELARCH LH (Old Style)
95-22-58-2	GOLF/JETTA 4DR REAR WHEELARCH RH (Old Style)

## UNIVERSAL REPAIR PARTS for DOMESTIC/IMPORT Trucks, Vans, SUV's or Autos



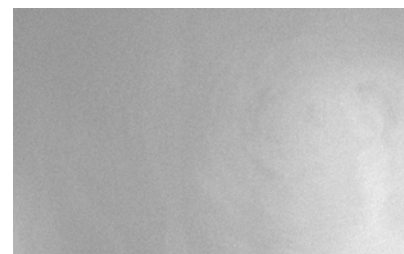
2'W x 3'H

SHEET STEEL.....9903-502



3'W x 4'H

SHEET STEEL.....9903-500



3'W x 5'H

SHEET STEEL.....9903-501



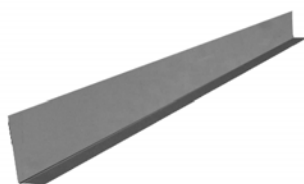
36"W x 3"H

FLEX EDGE.....9901-191



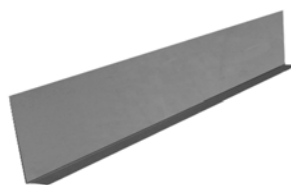
36"W x 3/4"H

FLEX EDGE.....9901-192



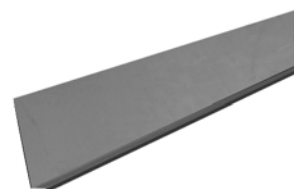
60"W x 5 1/2"H

DOOR BOTTOM (J LIP).....9902-130



60"W x 12"H

DOOR BOTTOM (J LIP).....9902-131



60"W x 12"H

DOOR BOTTOM (J LIP) w/return.....9902-132

### The "KeyParts" Advantage:

#### Quality Assurance:

KeyParts are manufactured under the rigid guidelines of International ISO 9001 Standards in state-of-the-art production plants. *Most other manufacturers don't follow these quality standards guidelines or use old technology.*

Advantage: Consistent quality is maintained.

#### Engineering Design:

KeyParts stamping forms are designed & engineered to the precise specifications of the original part. Parts are tested on actual vehicles.

*Many others are manufactured to be simply "close-enough" using only visual inspection requiring the end-user to make parts fit.*

Advantage: Superior fitting vehicle parts.

#### Die Stamping:

KeyParts are die-stamped to exactly match the characteristics such as body lines/definition of the original equipment manufacturer's (OEM) part. The presses and forms are continually monitored for stress, position, pressure, and tolerance at each stage. *Some other manufacturers don't practice these strict procedures.*

Advantage: Makes installation quicker & easier.

#### Steel Gauge:

KeyParts uses the highest gauge steel possible with each part. These meet or exceed the gauges of the OEM parts.

*Alot of other manufacturers use lighter gauges of steel to save on costs but can cause installation issues.*

Advantage: No buckling, warping, or stress lines.

#### Tooling:

KeyParts duplicate the OEM flanges, lips, and other connections to minimize installation problems. There are no rough or jagged edges. *Many other parts from different manufacturers require the end-user to deal with rough or jagged edges.*

Advantage: No major installation issues or hand tooling work required.

#### Fitting:

KeyParts most accurately fit the vehicle contour and body curves with no adjustments necessary.

*The majority of others require some bending, forming, and manipulation of the part.*

Advantage: No installation adjustments needed.

#### Finishing:

**PAINTED PARTS** - KeyParts uses the latest electro-coat primer finish coating on the parts. They are double-powder coated with a high quality black primer after being thoroughly cleaned and prepped. **CHROMED PARTS** - Keyparts uses a Triple Nickel chrome process which is the most proven available. It provides a durable finish with deep reflective properties.

*Other manufacturers fail to clean the parts properly before applying primer or just leave the steel unprotected altogether.*

Advantage: No primer flaking, no oil residue, and minimal cleaning required prior to installation.