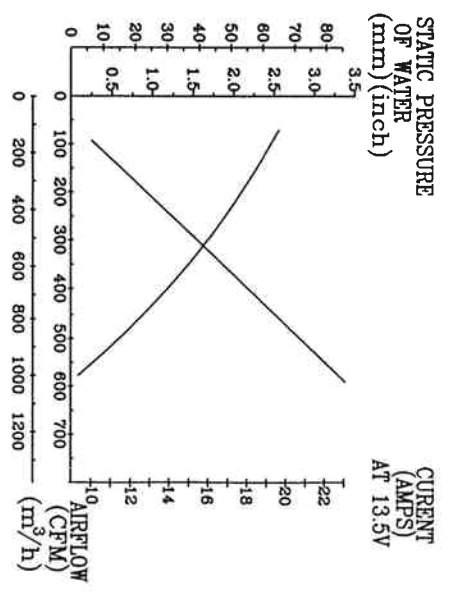
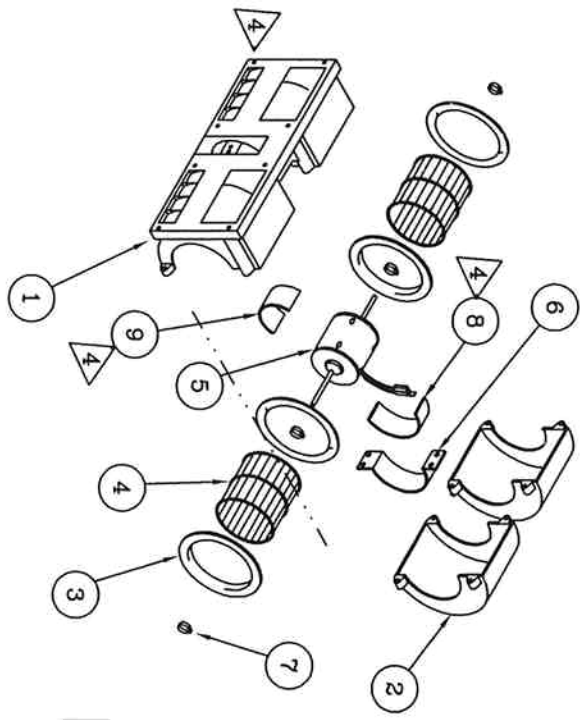
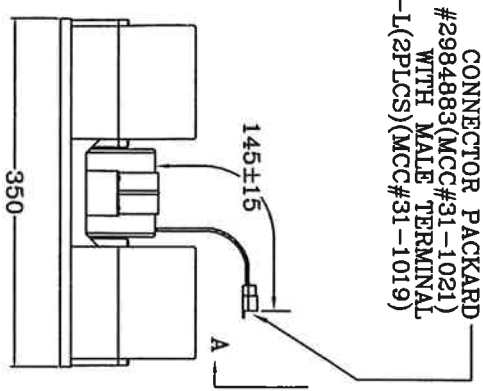


THIS DRAWING / DESIGN IS STRICTLY CONFIDENTIAL & THE COPYRIGHT THEREIN THE EXCLUSIVE PROPERTY OF **MOBILE CLIMATE CONTROL INC.** AND MAY NOT BE USED OR COPIED OR EXHIBITED WITHOUT THEIR WRITTEN PERMISSION.

CONNECTOR PACKARD
 #2984883(MCC#31-1021)
 WITH MALE TERMINAL
 #2971962-L(2PLCS)(MCC#31-1019)

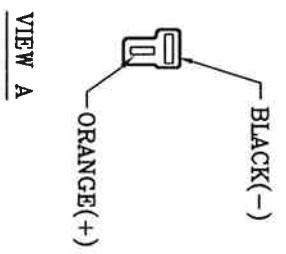
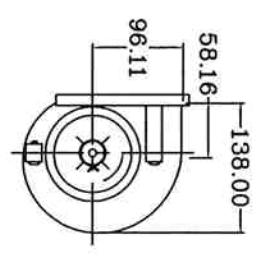
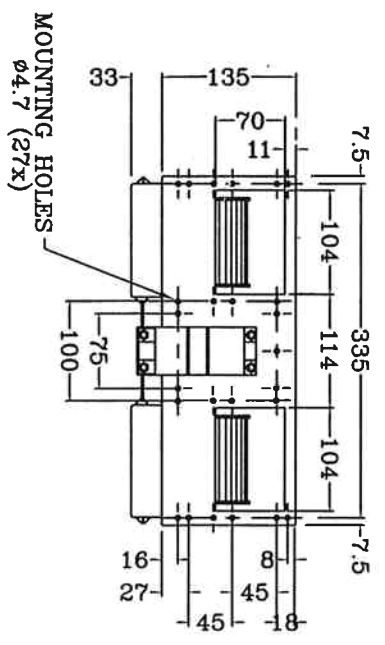


5 MOTOR HAS LONG LIFE BRUSHES AND SLEEVE BEARINGS.

BLOWER HOUSING MADE OF 30% GLASS FILLED POLYPROPYLENE (BLACK).

BLOWER WHEEL MADE OF HIGH IMPACT / HIGH HEAT ABS

WEIGHT - 2.15 kg

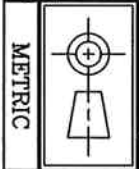


QTY	DESCRIPTION	SYM	PCS	PART NO.
1	28-05341/8" RUBBER PAD, L=100mm	4	1	28-05341/8" RUBBER PAD, L=100mm
1	28-05331/16" RUBBER PAD, L=100mm	8	1	28-05331/16" RUBBER PAD, L=100mm
4	25-0022 CLIP	7	4	25-0022 CLIP
1	25-0271 MOTOR MOUNT	6	1	25-0271 MOTOR MOUNT
1	25-0665 MOTOR 12V	5	1	25-0665 MOTOR 12V
2	25-0200 BLOWER WHEEL	4	2	25-0200 BLOWER WHEEL
2	25-0348 HOUSING TOP	3	2	25-0348 HOUSING TOP
1	25-0048 BLOWER HOUSING	2	1	25-0048 BLOWER HOUSING

CHECK BY: *CS* DATE: 9/9/91

REV	DESCRIPTION	DATE	BY
5	REVISED PER DCR #2931	AUG 31/01	HB
4	REVISED PER DCR #1710	DEC 7/99	CC
3	REVISED PER DCR #1028	JAN 27/98	DP
2	REVISED PER DCR #443	AUG 21/96	TM
1	DESCRIPTION		

THIS PRINT IS PROVIDED ON A RESTRICTED BASIS AND IS NOT TO BE USED IN ANY WAY DETRIMENTAL TO THE INTEREST OF MOBILE CLIMATE CONTROL, INC.



Mobile Climate Control Inc.
 North York - Ontario - Canada

15-1503
 BLOWER 12V

SCALE: NTS
 DATE: FEB 14, 1995
 DWG: P3-2393
 REV: 5