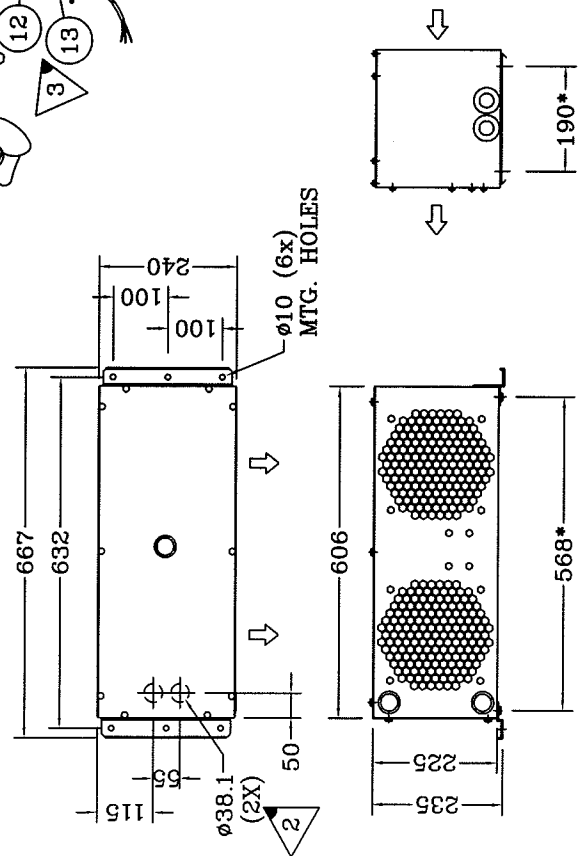
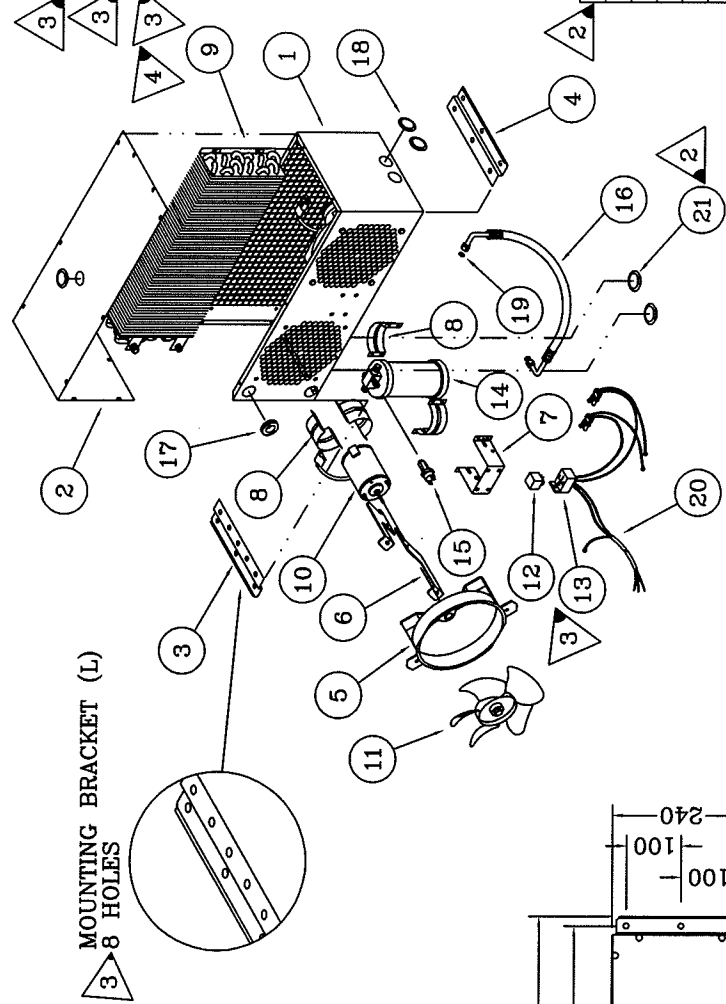


SPECIFICATIONS:

CAPACITY - 20,000 BTU/H
 AT 95°F AIR TEMPERATURE
 AIR FLOW - 620 CFM
 CURRENT - 14 AMPS @ 13.5V
 WEIGHT - 13.6 KG

CASING MADE OF 16GA AND MOUNTING BKTS.
 14GA CRS FINISHED IN BLACK SEMI-GLOSS
 POWDER COAT.

*) - DIMENSIONS OF MOUNTING HOLES
 (M8 THREAD)



SYM	PCS	PART NO.	DESCRIPTION
21	2	28-0012	SNAP-IN HOLE PLUG
20	1	25-0451	WIRING HARNESS
19	2	27-0601	O-RING #6
18	2	28-0013	SNAP IN PLUG
17	2	28-0005	GROMMET
16	1	27-0288	REFR. HOSE ASSY. #6
15	1	25-0343	PRESSURE SWITCH
14	1	26-0220	RECEIVER DRIER
13	1	25-0221	SOCKET RELAY
12	1	25-0251	RELAY 12V
11	2	25-0108	FAN
10	2	25-0470	MOTOR 12V
9	1	21-0122	CONDENSER COIL
8	6	24-0234	MOUNT
7	1	24-0343	RECEIVER DRIER BKT.
6	4	25-0434	MOTOR SUPPORT
5	2	25-0309	VENTURI ASSY.
4	1	24-1998	MOUNTING BKT. (R) (62mm)
3	1	24-1993	MOUNTING BKT. (L) (59.5mm)
2	1	24-0159	COVER
1	1	24-0145	CASING

CHECK BY: **YJ** DATE: **11/29/83**

SCALE: NTS BY: GR
 DATE: OCT 11, 1996
 DWG: P3-4157 REV: 4

14-0611
 CONDENSER 12V

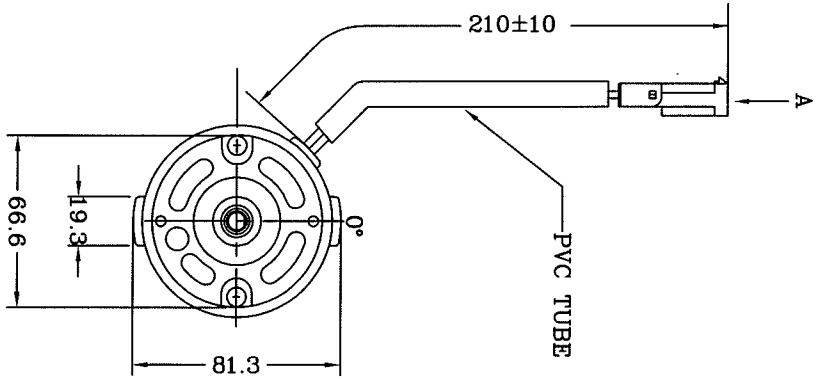
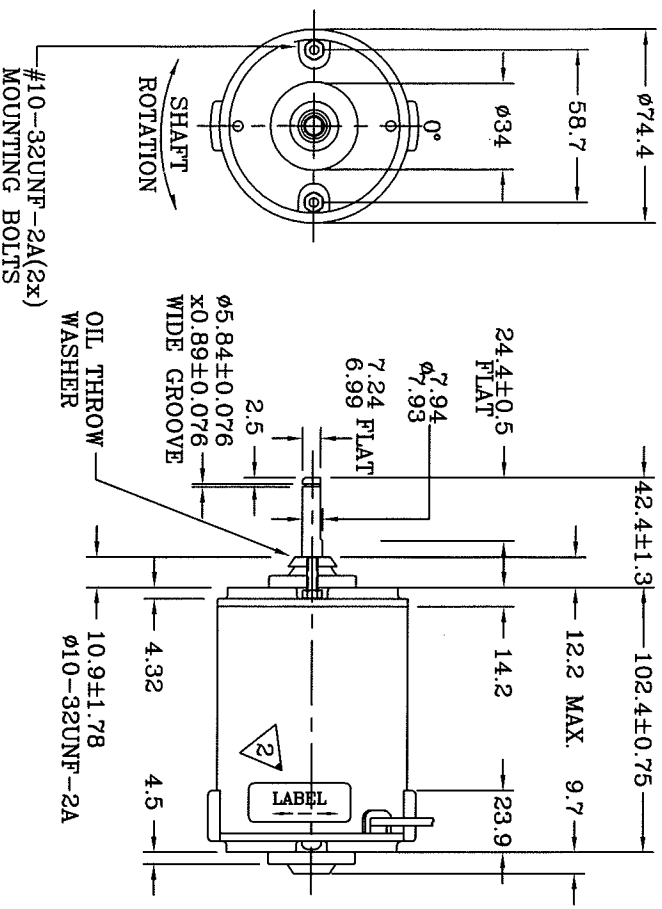
Mobile Climate Control Inc.
 North York - Ontario - Canada

METRIC

REVISION	DATE	BY	DESCRIPTION
4	DEC 04/03	MS	TOLERANCE UNLESS OTHERWISE SPECIFIED
3	REVISED PER ECN #3484	BY	ANG. 0.5 3 6 30 120 315 1000 OTHER
2	REVISED PER DCR #1181	CP	±1 ±0.15 ±0.2 ±0.5 ±0.8 ±1.2 ±2 ±3 ±4
1	REVISED PER DCR #1002	GR	THIS PRINT IS PROVIDED ON A RESTRICTED BASIS AND IS NOT TO BE USED IN ANY WAY DETRIMENTAL TO THE INTEREST OF MOBILE CLIMATE CONTROL INC.

ORANGE(+)
 BLACK(END)
 PACKARD WEATHERPAC
 CONNECTOR MALE #12010973 (MCC#31-1068)
 TERMINAL MALE #12124582-L (MCC#31-1039)(2x)
 SEAL #12010939 (MCC#31-1024)(2x)

NOTES
 PERFORMANCE - 13.5V DC, 17 AMPS
 3200 RPM AT 66 OZ.IN.
 MOTOR HAS BALL BEARING AND
 LONG LIFE BRUSHES.
 SEAL AROUND C/BOLT HEADS, NUTS,
 STRAIN RELIEF, BRUSH CAPS, ENDCASE
 JOINTS AND INTERLOCK SEAM.
 ALL WIRES 14GA GPT (105°)



2	REVISED PER EGN #3896	OCT 10,03	MS		
1	REVISED PER DCR #0980	NOV 6,97	NH		
STM	DESCRIPTION	DATE	BY		
	REVISION				

THIS PRINT IS PROVIDED ON A RESTRICTED BASIS AND IS NOT TO BE USED IN ANY WAY DETRIMENTAL TO THE INTEREST OF MOBILE CLIMATE CONTROL, INC.

4	2	31-1039	MALE TERMINAL
3	2	31-1024	CABLE SEAL 14 GA.
2	1	31-1068	TWO WAY MALE
1	1	25-0165	MOTOR 12V

CHECK BY: *YJ* DATE: *11/11/03*

SCALE: NTS BY: GR

DATE: NOV 30, 1994

DWG: P3-2212 REV: 2

METRIC

MCC Mobile Climate Control Inc.
 North York - Ontario - Canada

25-0470
MOTOR 12V