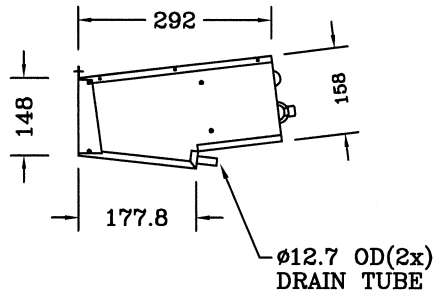
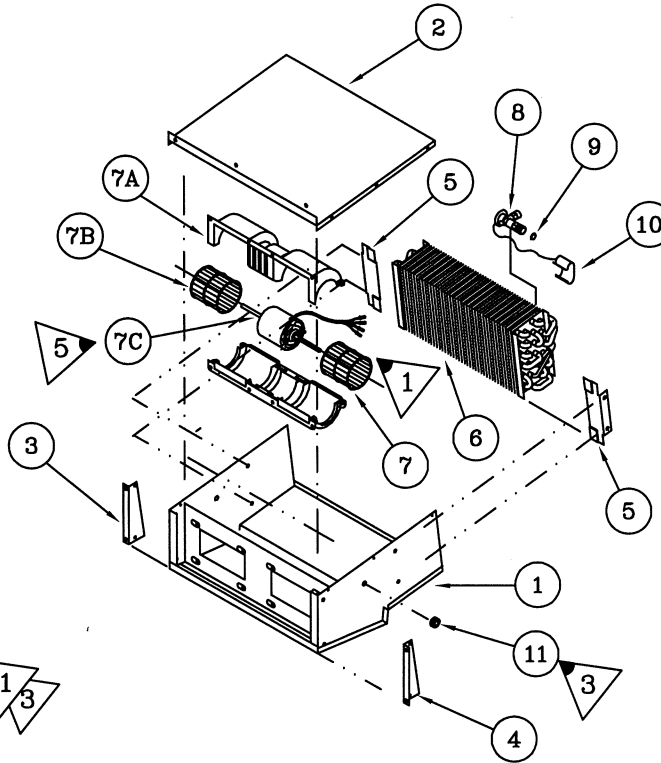
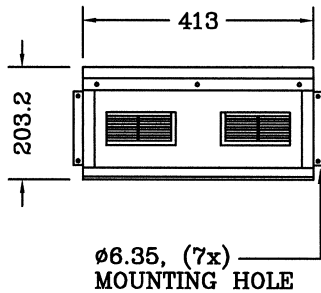
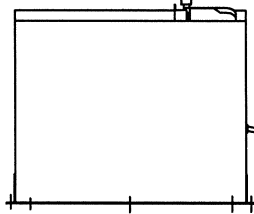


EL. LEADS, EXT. 100±13
ORANGE-HIGH, RED-MEDIUM
YELLOW-LOW, BLACK-GROUND

5/8-18 MALE (OR #6)
7/8-14 MALE (OR #10)
REFR. HOSE CONNECTIONS



SPECIFICATIONS

COOLING - 6390 W (21800 BTU/H)
AIRFLOW - 552 m³/h (325 CFM)
CURRENT DRAW - 11.6 AMPS (AT 13.5V)
WEIGHT - 7.7 KG (17 LBS)

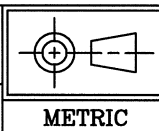
3-SPEED MOTOR

MADE OF 18GA (1.25mm) CRS AND FINISHED
IN BLACK SEMI-GLOSS EPOXY POWDER COAT.

3	11	1	28-0014	GROMMET
	10	1	26-0006	BULB CLAMP
	9	1	27-0602	O-RING #8 (R134A)
	8	1	26-0162	EXPANSION VALVE (R134A)
5	7C	1	25-0053	MOTOR 12V
	7B	2	25-0021	BLOWER WHEEL
	7A	1	25-0017	BLOWER HOUSING
	7	1	15-0503	BLOWER ASSY. 12V
	6	1	21-0045	EVAPORATOR COIL
4	5	2	24-0194	COIL BRACKET
	4	1	24-0193	MOUNTING BRACKET (R)
	3	1	24-0192	MOUNTING BRACKET (L)
	2	1	24-0270	COVER
	1	1	24-0267	CASING

5	REVISED AS PER ECN #5660	MAY 08/08	JZ
4	REVISED AS PER ECN #3555	JAN 20/03	BV
3	REVISED AS PER ECN #3264	APR 29/02	SG
2	REVISED AS PER DCR #2720	APR 16/01	LY
SYM	DESCRIPTION	DATE	BY
	REVISION		

THIS PRINT IS PROVIDED ON A RESTRICTED BASIS AND IS NOT TO BE USED IN ANY WAY DETRIMENTAL TO THE INTEREST OF MOBILE CLIMATE CONTROL INC.



CHECK BY: *MM* DATE: *May 09, 08*
 Mobile Climate Control Inc.
 Toronto - Ontario - Canada

13-1153
AIR CONDITIONER 12V

SCALE: NTS BY: DP
 DATE: MAR 24, 1997
 DWG: P3-4861 REV: 5