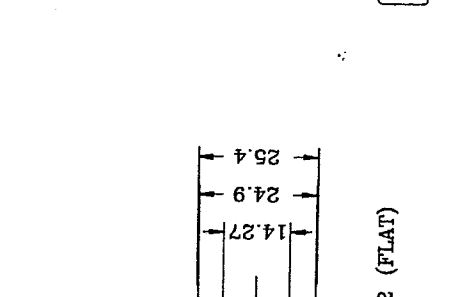
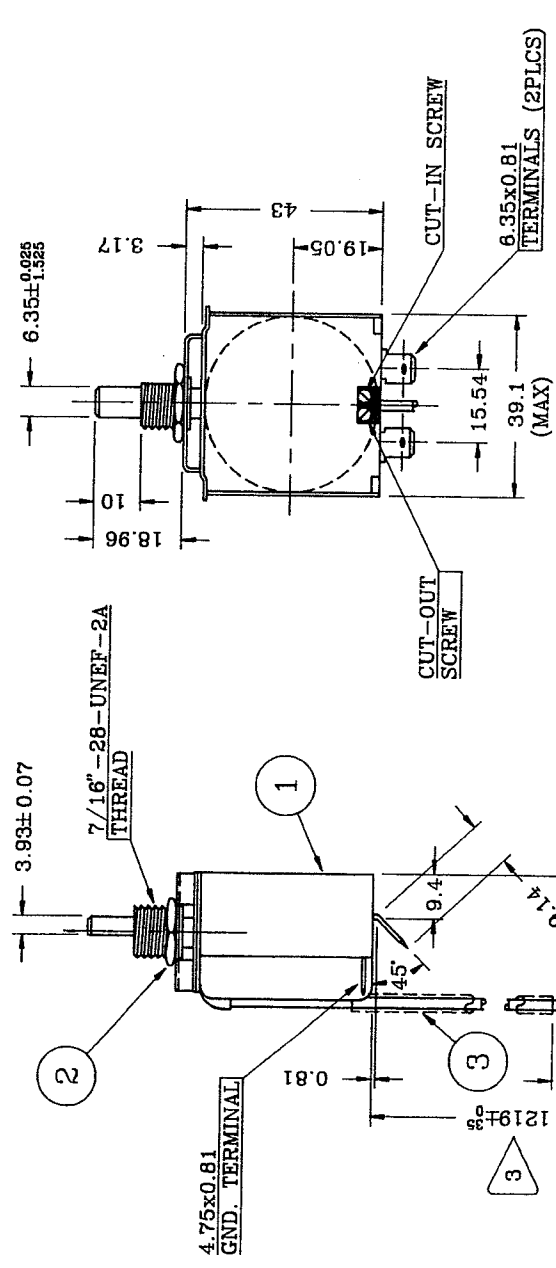


REVISIONS			
SYM	DESCRIPTION	DATE	BY
1	ADDED 250 DIM, ADDED TEXT	04/24/92	RS
2	DIM 150 WAS 250	07/07/93	HN
3	DIM 1219 WAS 914	07/07/93	HN



NOTE:

CUT IN AND CUT OUT CAN BE CHANGED BY:
 1/2 SCREW TURN = 3.5°F ON CUT OUT
 1/2 SCREW TURN = 3.0°F ON CUT IN
 CLOCKWISE GIVES COLDER TEMP.
 DO NOT EXCEED ONE FULL TURN.
 ALWAYS TURN CUT-OUT SCREW FIRST,
 WARRANTY VOID IF FIELD ADJUSTED.
 POWER ELEMENT (CAP. TUBE) CONTAINS
 R764.



TEMPERATURE CALIBRATION °F	
COLD	WARM
CUT-OUT	CUT-IN
33±1.5°	45±1.5°
	66±4.0°

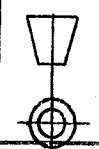
THIS DWG REPLACES EARLIER DATED JAN 30/92

3	1	28-00311069mm PVC HOSE (PROTECTIVE)
2	1	25-0066 JAMB NUT
1	1	25-0045 THERMOSTAT

SYM	PART NO	DESCRIPTION
	25-0118	THERMOSTAT ASSY.

SCALE: NTS
 DATE: JULY 7, 1993
 DWG: P3-0925 REV. 3

MCC Mobile Climate Control Inc.
 30 E. 1st St., Suite 100, Chicago, IL 60601
 Telephone (416) 738-8270 - Fax (416) 738-7276



THIS DRAWING / DESIGN IS STRICTLY CONFIDENTIAL & THE
 COPYRIGHT THEREIN THE EXCLUSIVE PROPERTY OF
MOBILE CLIMATE CONTROL INC.
 AND MAY NOT BE USED OR COPIED OR EXHIBITED WITHOUT
 THEIR WRITTEN PERMISSION.