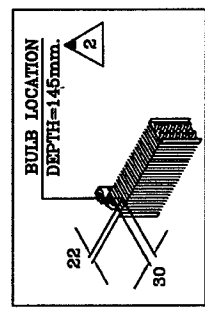
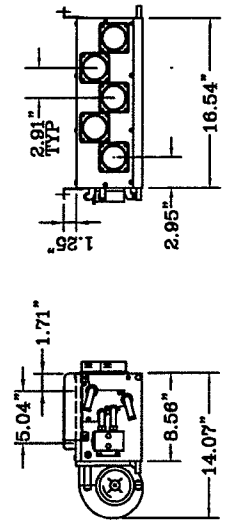
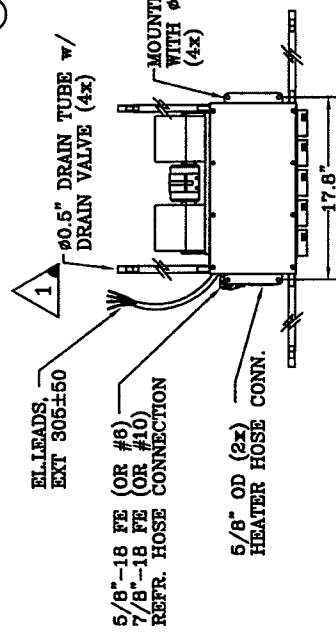
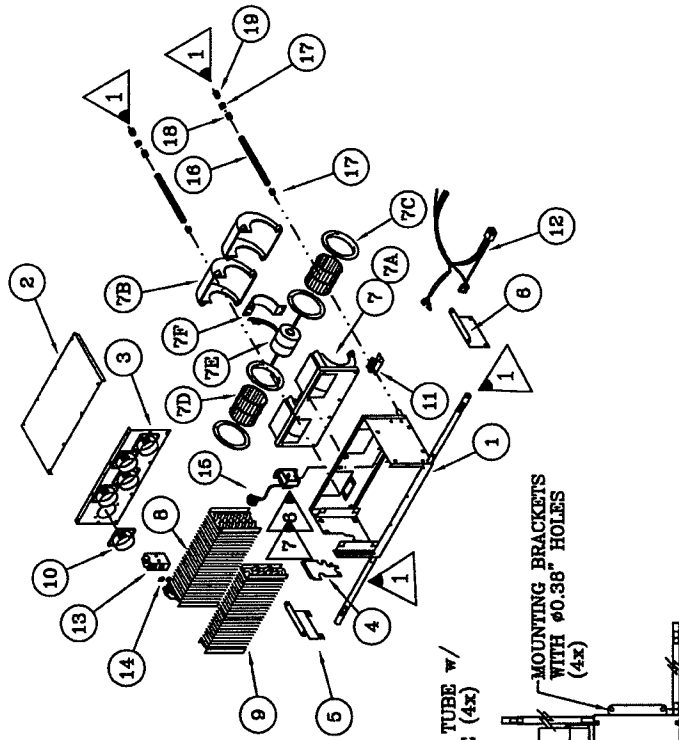


THIS DRAWING/DESIGN IS STRICTLY CONFIDENTIAL & THE
 COPYRIGHT THEREIN THE EXCLUSIVE PROPERTY OF
MOBILE CLIMATE CONTROL INC.
 AND MAY NOT BE USED OR COPIED OR EXHIBITED WITHOUT
 THEIR WRITTEN PERMISSION

EL. CONNECTION
 ORANGE - HIGH
 RED - MEDIUM
 YELLOW - LOW
 BLACK - GROUND



SPECIFICATIONS:

- HEATING - 10500 W (36000 BTU/H)
- COOLING - 8350 W (28500 BTU/H)
- AIRFLOW - 765 m³/h (450 CFM)
- CURRENT - LOW SPEED 7.5 AMPS @13.5V
- MED SPEED 10.2 @13.5V
- HIGH SPEED 16.6 AMPS @13.5V
- WEIGHT - 8.6 KG (19 LBS.)

PERMANENT MAGNET MOTOR WITH BALL BEARING.

CASING MADE OF 18GA (1.25mm) CRS. AND FINISHED IN BLACK SEMI-GLOSS POWDER COAT.

1	19	4	27-0421	DRAIN VALVE
1	18	4	27-0422	DRAIN CONNECTOR
1	17	8	27-0091	DRAIN HOSE CLAMP 1/2"
3	16	4	27-1998	DRAIN HOSE 1/2" (L=300mm EA)
4	15	1	25-1163	THERMOSTAT
	14	2	27-0602	O-RING #8
	13	1	26-0190	BLOCK VALVE
	12	1	25-0671	WIRING HARNESS
	11	1	25-0136	RESISTOR 12V
	10	5	23-0125	HOSE ADAPTER 2.5"
	9	1	22-0348	HEATER COIL
	8	1	21-0091	EVAPORATOR COIL
	7F	1	25-0271	MOTOR MOUNT
	7E	1	25-0645	MOTOR 12V
	7D	2	25-0200	BLOWER WHEEL
	7C	4	25-0060	VENTURI
	7B	2	25-0348	HOUSING TOP
	7A	1	25-0048	BLOWER HOUSING
	7	1	15-1501	BLOWER 12V
	6	1	24-3892	MOUNTING BRACKET (R)
	5	1	24-3881	MOUNTING BRACKET (L)
	4	1	24-0017	COIL COVER (H)
	3	1	24-0013	COVER
	2	1	24-0028	COVER
	1	1	24-0027	CASING

7	REVISED AS PER ECN# 5412	NOV 05/07	OM
6	REVISED AS PER ECN# 5887	APR 11/03	BY
5	REVISED AS PER DCR# 2828	DEC 10/01	MS
4	REVISED AS PER ECN# 3019	NOV 1/01	HB
3	DESCRIPTION	DATE	BY
2	REVISION		
1			

CHECK BY: <i>CP.</i>	DATE: <i>Nov 6/07</i>	DESCRIPTION
SCALE: NTS	REV: JAP	
13-2505	DATE: JAN 19, 1999	
HEATER-AC 12V	REV: P3-8558	

	METRIC
--	--------

	Mobile Climate Control Inc.
	North York - Ontario - Canada

THIS PRINT IS PROVIDED ON A RESTRICTED BASIS AND IS NOT TO BE USED IN ANY WAY DEPENDANTAL TO THE INTEREST OF MOBILE CLIMATE CONTROL INC.